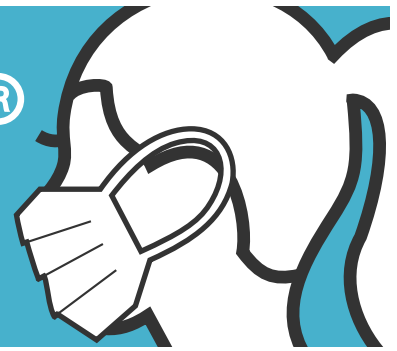


PROTECT[®] AND CARE



PRODUCT FILE

COVERALL with zipper, hood & elastic cuffs PP 35gsm
Disposable Non-sterile Ref. A00353 - A00354

Specifications

- For single use.
- These disposable coveralls offer protection against cleaning-, paint- and spray-work that is not harmful in nature. In addition, they are widely used as visitor **overalls for visitors** to hygienic production facilities.
- Soft, supple coverall for optimum wearing comfort.
 - Non woven, high quality PP 35gsm
 - Hypo-allergenic: without glass fibers & latex free
 - Light and breathable
 - Water repellent
- Model:
 - Concealed 2-way front zip
 - Fixed hood
 - Long sleeves, trouser legs and hood with elastic for good closure
 - Elastic waist at the back for better fitting



Ref. A00353

Ref. A00354



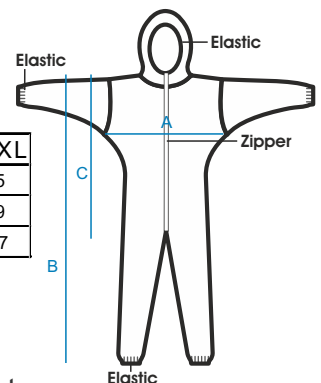
ELASTIC IN:
HOOD

SLEEVES

FEET

- Sizes: S - M - L - XL - XXL - XXXL

	S	M	L	XL	XXL	XXXL
A	60	63	66	69	72	75
B	84	87	90	93	96	99
C	160	166	172	177	182	187



- Colours:
 - A00353 White
 - A00354 Navy Blue
- * Available in other colours on request

- Packaging:
 - provided with barcode and QR code
 - Info in 27 languages: NL, FR, EN, DE, ES, IT, PT, BG, CS, DA, EL, FI, HU, HR, KK, LT, LV, NO, PL, RO, RU, SK, SL, SR, BS, SV, TR & UK

Packaging

Individually packed: 1 piece/polybag
Master box: 50 pieces

WEGWERP OVERALL - met rits, kap en elastieken
COMBINAISON JETABLE - avec zip, capuche et élastiques
DISPOSABLE COVERALL - with zipper, hood and elastics
EINWEG OVERALL - mit Reißverschluss, Kapuze und Gummizügen
TUTA MONOUSO - con cremallera, capuccio ed elastici
OVEROL DESECHABLE - con cremallera, capucha y elásticos

NON-STERILE ● PP 35gsm²
WET - BLANC - WEISS - BIANCO - BLANCO

1ST/PC

SIZE XXL

In overeenstemming met BS 2016/425 Cat.1
Conforme à (all) 2016/425 Cat.1
In accordance with BS 2016/425 Cat.1
10-2015/08/2013

PPE CE

Kenmerken:
• PP 35gsm² (zonder glasvezel), waterdichtend
• Rits aan de voorkant
• Elastiek aan manchetten, enkels, kap en rug

Caractéristiques:
• PP 35gsm² (sans fibres de verre), hydrofuge
• Fermeture à glissière devant
• Élastique aux poignets, chevilles, capuche & dos

Characteristics:
• PP 35gsm² (without glass fibers), water repellent
• Front zipper
• Elastic on cuffs, ankles, hood and in back

EU declaration of Conformity
www.protectandcare.be

Barcode: COM0111 A00353XXXL

MADE IN CHINA

In accordance with (EU) 2016/425 Cat.1
Shelf life: 5 years

